

ALTAMIRA COLLECTION

By creating a collection of 4 benches made from 100% post-consumer plastics, the artist, François Blommaerts, honours the recycling process as a way to respect nature. Just as in nature, the Altamira Collection is a play of waves as found in old canyons in Arizona where the artist found his inspiration for the Altamira Collection.

Enjoy the lounge comfort of the benches while reflecting about life.



MATERIALS AND FINISHES

The models are made from polyolefine, a plastic made from 100% recycled household plastic waste. They can be completely recycled again at the end of their life. The collection consists of 4 different artistic models which can be purchased separately.

INSTALLATION

The benches are delivered pre-assembled. You can anchor these, but it is not as necessary considering that the modules are incredibly heavy themselves.

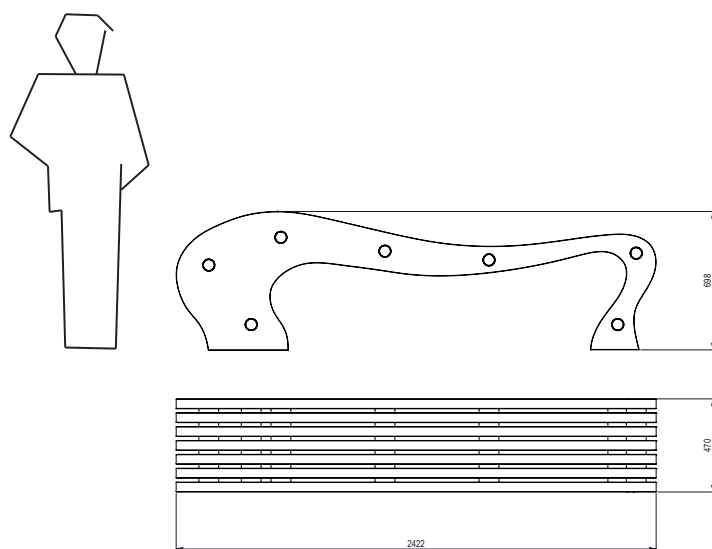
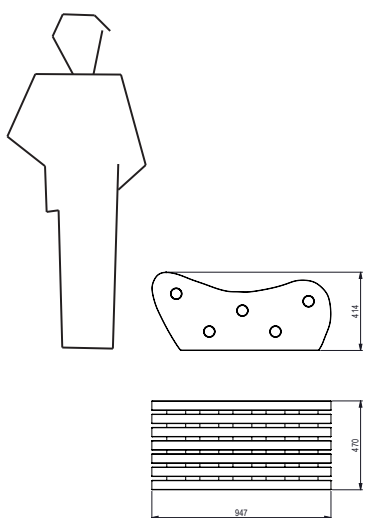
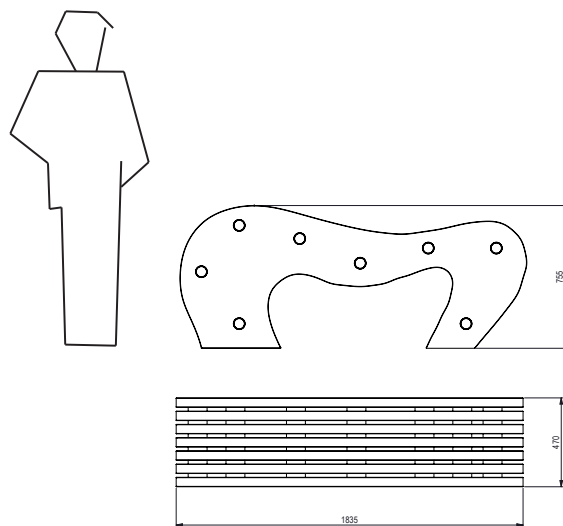
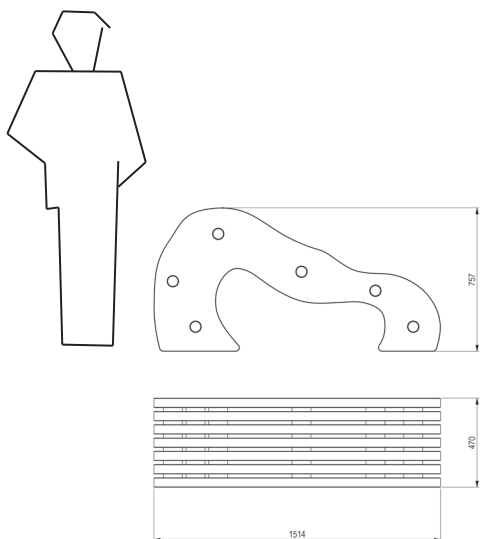
MAINTANCE

No functional maintenance is required, except to preserve the original colour of the models. Continued exposure to the sun during the first year causes 10-20% discolouration, after which the colour stabilises.

WEIGHTS

Model 1: 200 kg
Model 2: 284 kg
Model 3: 109 kg
Model 4: 235 kg





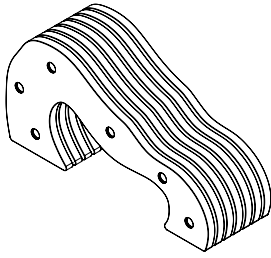
Sizes in mm



Structure and colors

Size LxBxH
in mm

Model 1

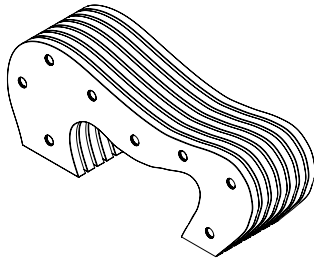


Base: Polyolefine

1514 x 470 x 757



Model 2

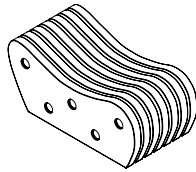


Base: Polyolefine

1835 x 470 x 755



Model 3

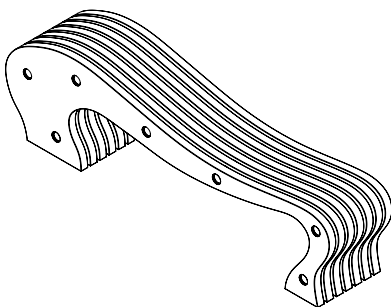


Base: Polyolefine

947 x 470 x 414



Model 4



Base: Polyolefine

2422 x 470 x 698



SAFETY INSTRUCTIONS

ECO-oh! products require little or no maintenance and are resistant to water and moisture, giving them a long life.

They are best cleaned with lukewarm water and a non-caustic soap.

Cleaning with caustic (solvent-based) agents and/or a high-pressure cleaner is not recommended and can lead to irreversible damage

NOTE: the deviation on the dimensions can be up to 3%